



12/96-98 Hampden Road Russell Lea, NSW



Immaculately Presented Apartment with Leafy Views

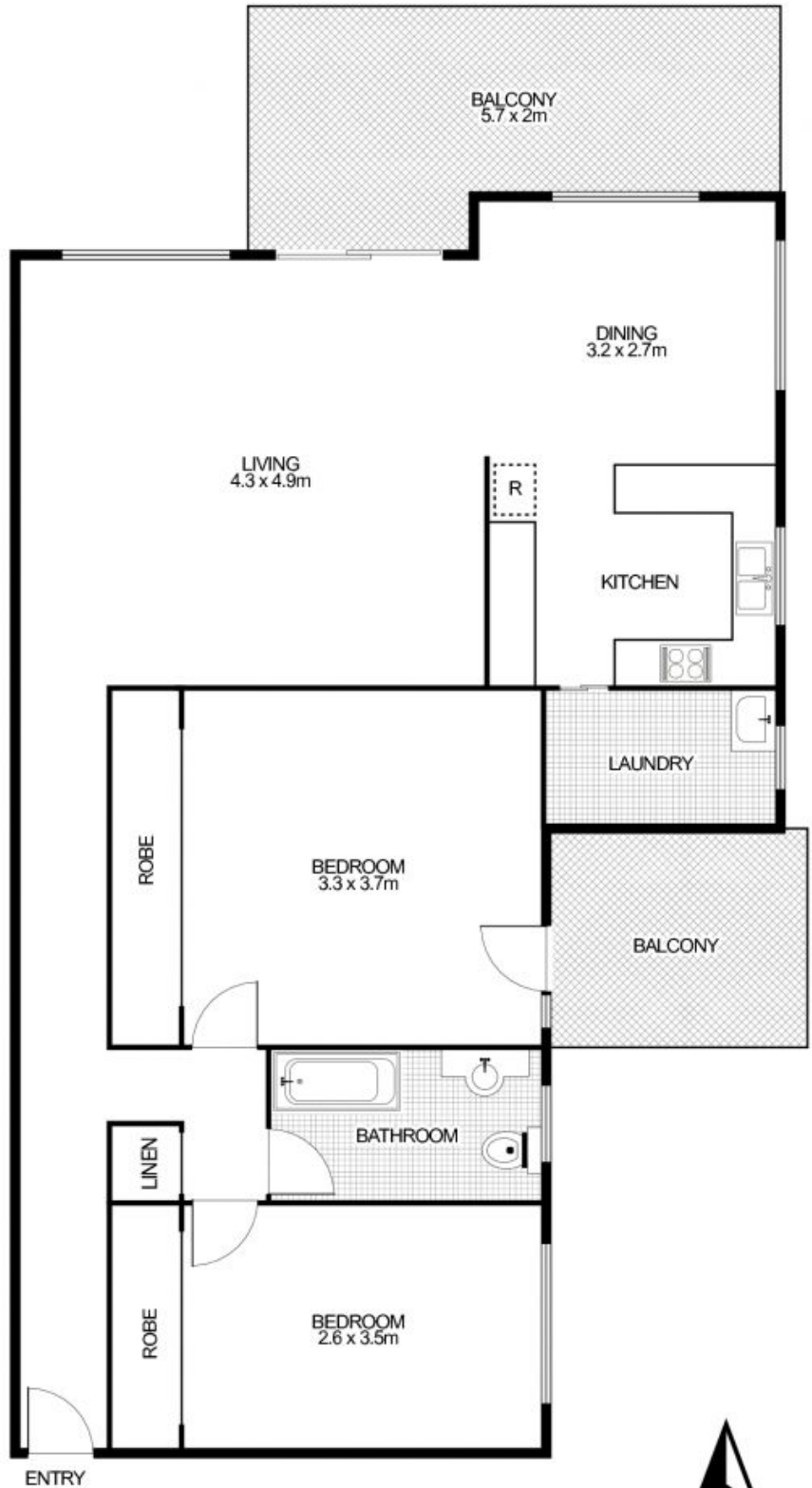
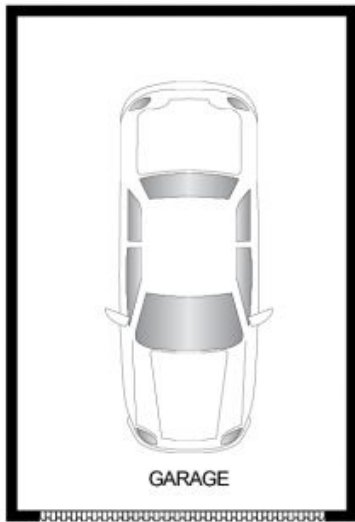
Beautifully presented apartment situated in a small block. Featuring a generous floor plan and light filled interiors, this apartment will suit the most fastidious tenant. Conveniently located close to all amenities including transport, parks, Bay, local shops and cafes.

Price: DEPOSIT TAKEN
Available Date: 2024-06-18

- Well presented and ready to move into for immediate enjoyment
- Separate living and dining area, with reverse cycle air conditioning
- Balcony captures a leafy aspect in private surrounds
- Modern kitchen with quality appliances, internal laundry
- Contemporary bathroom with sleek finishes
- Spacious bedrooms with built-ins and second balcony to main
- Automatic single lock up garage with remote access

Emanuel Koumis

0402 644 121



12/96-98 Hampden Road, RUSSELL LEA



time

This floor plan is intended as a guide only. Layout dimensions are approximate only. No representations or warranties of any nature whatsoever are given or intended. Any person using this information should rely on their own enquiries. Floor Plans by SURROUNDPIX.