



4/55 Parkview Road Russell Lea, NSW



SOLD Prior to Auction - North Facing with Park and Bay Views

This stunning North-facing 2 bedroom, 1.5 bathroom apartment offers the perfect blend of comfort, style, and picturesque views.

As you step inside, you'll be greeted by spacious living areas that are filled with natural light, creating a warm and inviting atmosphere. The open plan living and dining area is perfect for both entertaining guests and relaxing in comfort.

One of the standout features of this apartment is the large balcony, accessible from both main bedroom and living areas, which provides an expansive outdoor space. From here, you can take in the picturesque views of the park and bay, making it the ideal spot for morning coffee or evening relaxation.

Both bedrooms are generously sized, both with built in wardrobes offering plenty of space and comfort.

Nestled in a prime location within a small boutique security block with low levies plus large lock up garage, just steps away from lush parks, scenic walking trails, and the sparkling bay. You'll also enjoy the convenience of nearby shopping, dining, and public transport options.

This apartment is perfect for those who appreciate...

- 2 Generously sized bedroom, 1.5 bathrooms, large lock up garage
- Spacious living areas filled with natural light & Northerly aspect
- Expansive balcony with luscious views over the park and bay
- Boutique low maintenance security building with low levies
- Prime location near bay walkways, shops, schools & transport

Price: SOLD Prior to Auction | Time Realty
Council Rates: \$359.00 p/q
Water Rates: \$173.00 p/q
Strata Rates: \$1,112.32 p/q

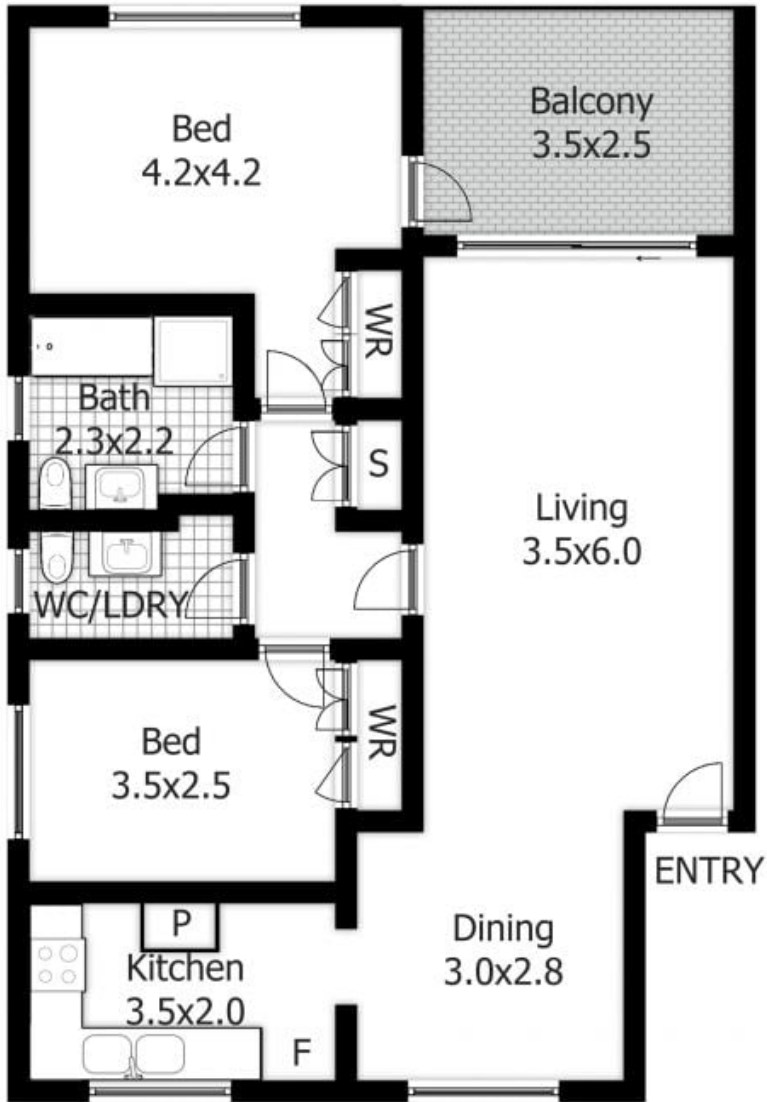
Frank Settineri

0414 889 319

Adam Scappatura

0413 355 481

PLANS SHOWN ONLY INDICATIVE OF LAYOUT. DIMENSIONS ARE APPROXIMATE.



(NOT IN POSITION)



4/55 Parkview Rd
RUSSELL LEA

EST - 1979
time