



26/11-21 Rose Street Chippendale, NSW



2



1



1

## Contemporary Inner City Living

Nestled in the heart of Chippendale, this sophisticated mid-floor apartment offers a contemporary living experience with captivating city views. Positioned on a highly sought-after street, the location is unbeatable, just a short stroll from both the University of Technology and the University of Sydney, making it ideal for students, professionals, or investors.

The apartment boasts two spacious double bedrooms, each equipped with built-in wardrobes, providing ample storage space. The modern bathroom features a bathtub, perfect for unwinding after a long day. The open-plan living area seamlessly connects to a private, expansive balcony, creating an inviting space for entertaining or simply enjoying the urban skyline.

The well-maintained kitchen is a chef's delight, featuring stainless steel appliances, a gas cooktop, and ample counter space. The floating timber floors throughout the living areas add a touch of elegance, while the internal walk-in laundry with additional storage ensures convenience and practicality.

Secure undercover parking and a security building, offering peace of min...

- Mid-Floor 2 bedroom apartment in the heart of Chippendale
- Open-plan living area leading to a large and private balcony
- Well-maintained gas kitchen with stainless steel appliances
- Floating timber flooring, modern bathroom with a bathtub
- Secure undercover parking in a security building complex
- Close to all amenities including shops, parks & transport

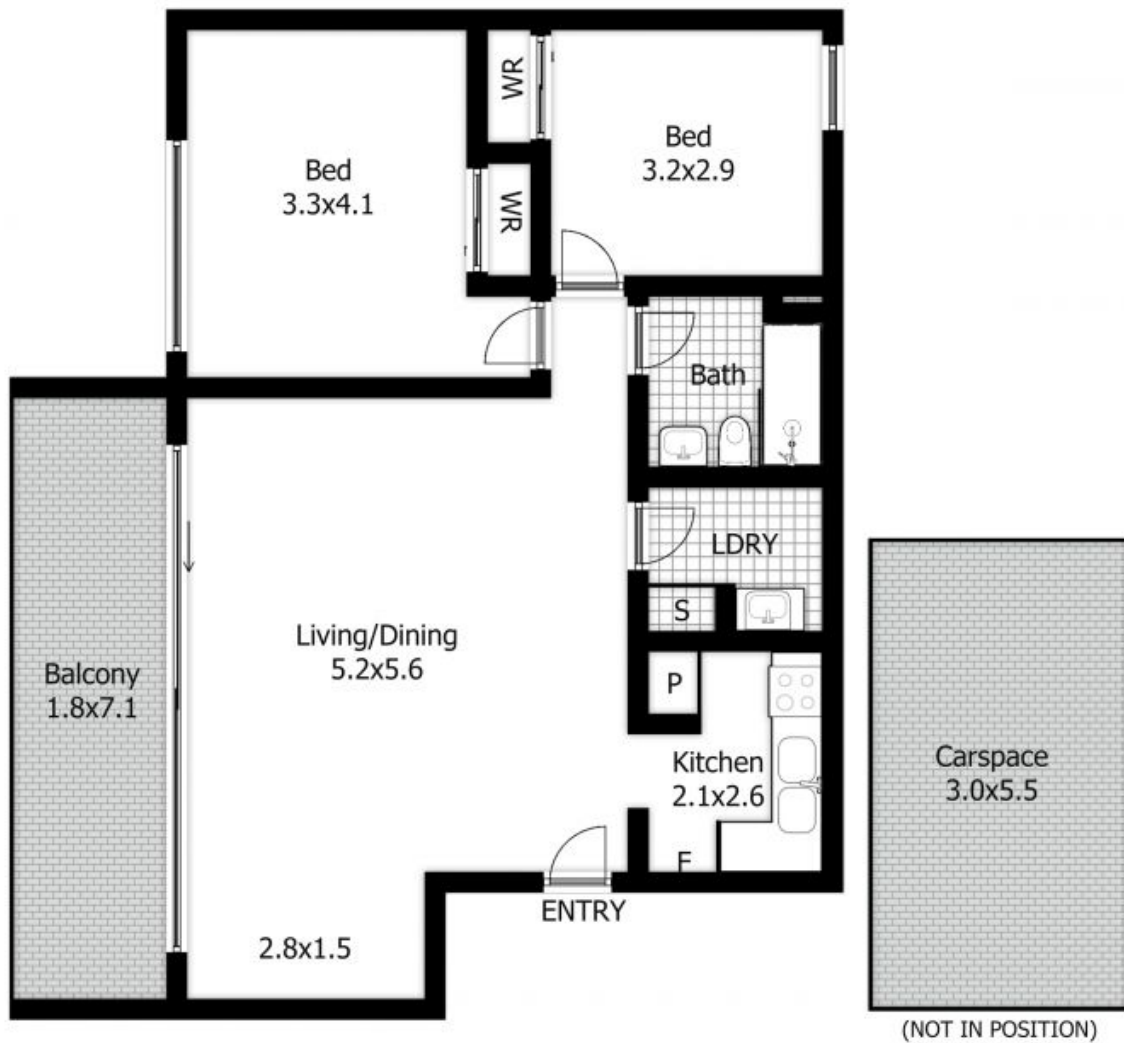
**Price:** SOLD | Time Realty  
**Council Rates:** \$308.00 p/q  
**Water Rates:** \$180.00 p/q  
**Strata Rates:** \$2,522.44 p/q

**Adam Scappatura** **Frank Settineri**

0413 355 481

0414 889 319

PLANS SHOWN ONLY INDICATIVE OF LAYOUT. DIMENSIONS ARE APPROXIMATE.



26/11 Rose St  
CHIPPENDALE

EST — 1979  
time